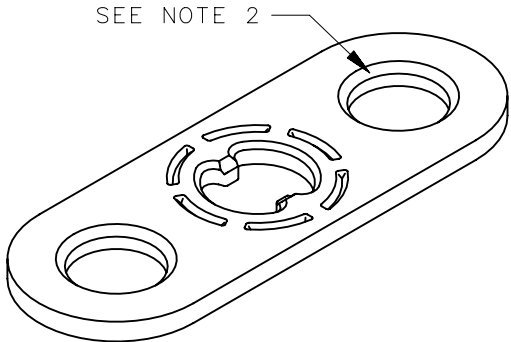
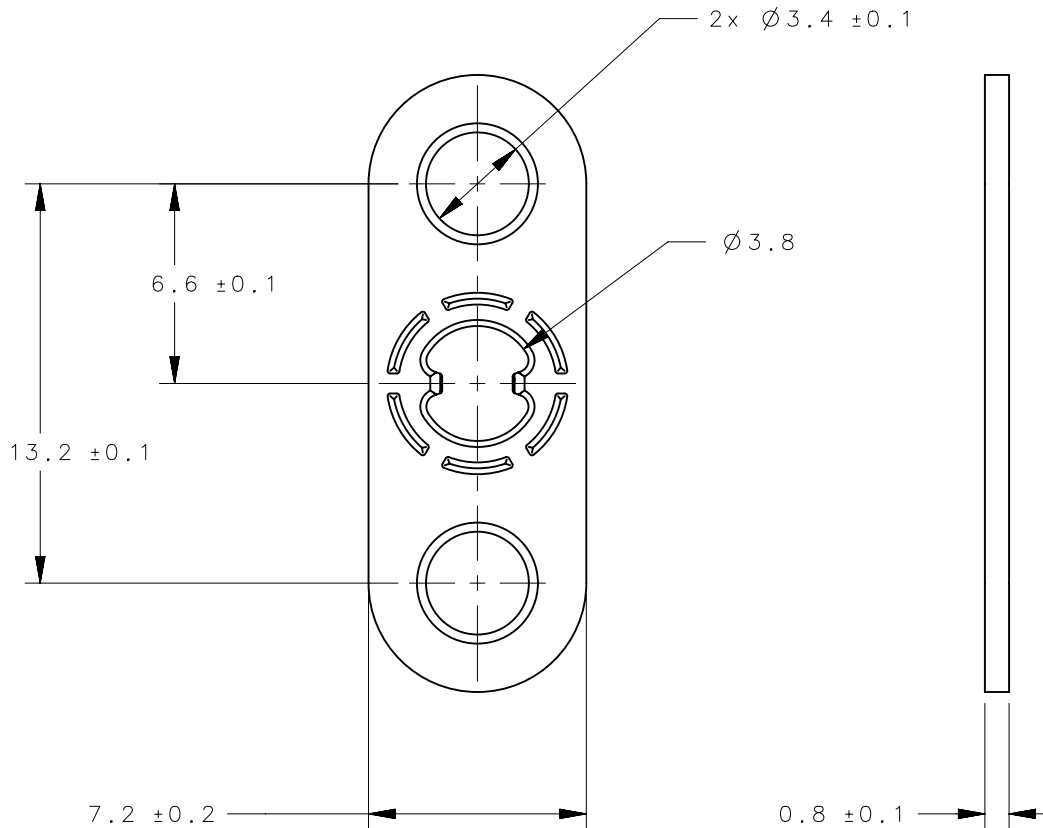


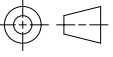

REVISION HISTORY			
REV	DATE	BY	DESCRIPTION
D	07SEP2017	MJS/JCG	PRN: P2017-1189



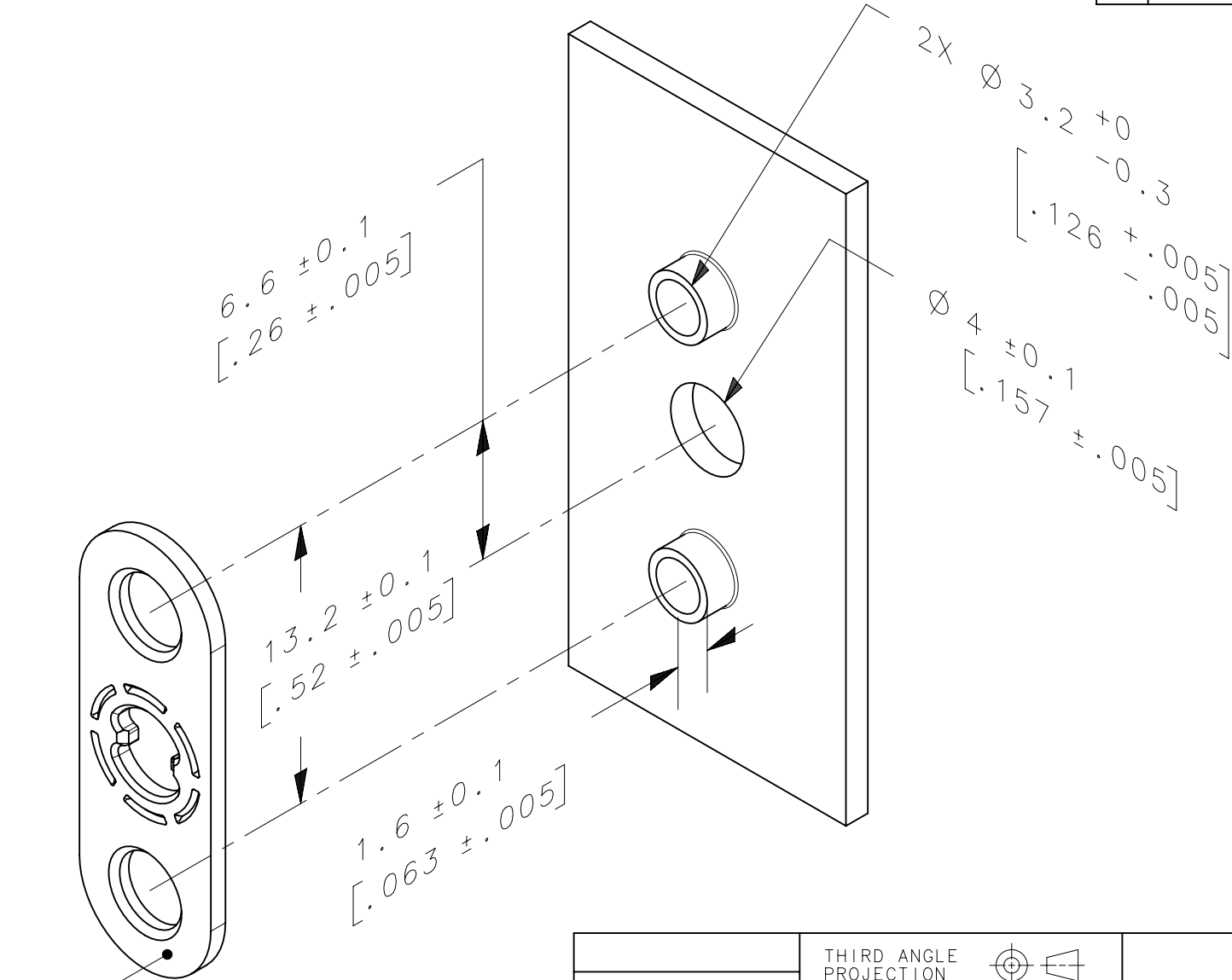
SEE SHEET 2 FOR INSTALLATION.

NOTES:

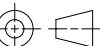
1. RoHS COMPLIANT.
2. MATING POST OD TO BE $\varnothing 3.2+0/-0.3$.
3. COSMETIC SPECIFICATION:
ALL SURFACES, UNLESS OTHERWISE NOTED,
ARE TO CONFORM TO A CLASS "C"
DESIGNATION AS DESCRIBED IN SOUTHCO
COSMETIC SPECIFICATION:
S-121-02 FOR ZINC PLATING

D9-61-11	RECEPTACLE	STEEL	ZINC PLATE
PART NUMBER	TYPE OF COMPONENT	MATERIAL	FINISH
	THIRD ANGLE PROJECTION 	 CONNECT • CREATE • INNOVATE	
	MILLIMETERS [IN]		
	TOLERANCES UNLESS OTHERWISE NOTED	DESCRIPTION D9 CRIMP ON RECEPTACLE, FLAT STYLE, #3.5 SIZE	
SURFACE AREA	ALL DIMENSIONS WITHOUT TOLERANCES ARE FOR REFERENCE ONLY.		
VOLUME		SIZE A4	SYSTEM NX
PROPRIETARY ITEM EXCEPT FOR USES EXPRESSLY GRANTED IN WRITING, INFORMATION DISCLOSED HEREON IS CONFIDENTIAL AND ALL RIGHTS, PATENT AND OTHERWISE, ARE RESERVED BY SOUTHCO, INC.	PER ASME Y14.5M-1994	DWG NO. J-D9-61	
		DRAWN BY IR	DATE 05JAN2016
		SCALE DNS	SHEET 1 OF 2

REVISION HISTORY			
REV	DATE	BY	DESCRIPTION
D	07SEP2017	MJS/JCG	PRN: P2017-1189



INSTALL FLAT RECEPTACLE WITH
CHAMFERS FACING AWAY FROM PANEL.

	THIRD ANGLE PROJECTION		<div>southco®</div> <div>CONNECT • CREATE • INNOVATE</div>				
	MILLIMETERS [IN]		DESCRIPTION D9 CRIMP ON RECEPTACLE INSTALLATION				
	TOLERANCES UNLESS OTHERWISE NOTED						
SURFACE AREA	mm ²	ALL DIMENSIONS WITHOUT TOLERANCES ARE FOR REFERENCE ONLY.	SIZE A4				
VOLUME	mm ³						
PROPRIETARY ITEM							
EXCEPT FOR USES EXPRESSLY GRANTED IN WRITING, INFORMATION DISCLOSED HEREON IS CONFIDENTIAL AND ALL RIGHTS, PATENT AND OTHERWISE, ARE RESERVED BY SOUTHCO, INC.		PER ASME Y14.5M-1994	DRAWN BY MJS		DATE 14JUN2016	SCALE DNS	SHEET 2 OF 2